

JUNG PUMPEN K2

CONDENSATE PUMP

APPLICATION

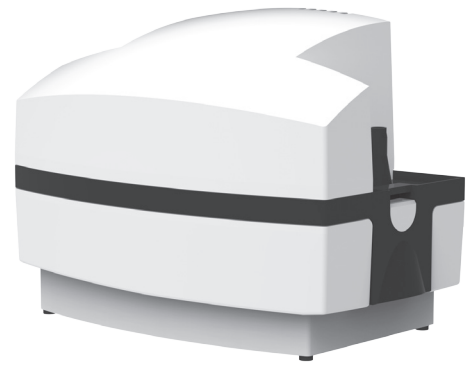
The K2 condensate pump has been specially developed for removing condensate from condensing boilers, air conditioning systems and air dehumidifiers.

The K2 satisfies the highest requirements. It is distinguished not only by its modern design but above all by its consistently quiet operation, its compact tank dimensions and its reliability. The pump is ready to connect and operates fully automatically.

The pump incorporates a built-in alarm. The wear-free sensor system monitors the running time of the pump and gives early warning of potential faults. This message can be conveyed to an external transmitter using the potential-free contact to generate a signal. The two-part design of the motor and collecting chamber and the clip fasteners at the side make for easy cleaning without tools.

The K2 is resistant to acid condensate with a pH-value of ≥ 2.7 . The maximum inlet temperature of the pumped media is 104°F (40°C).

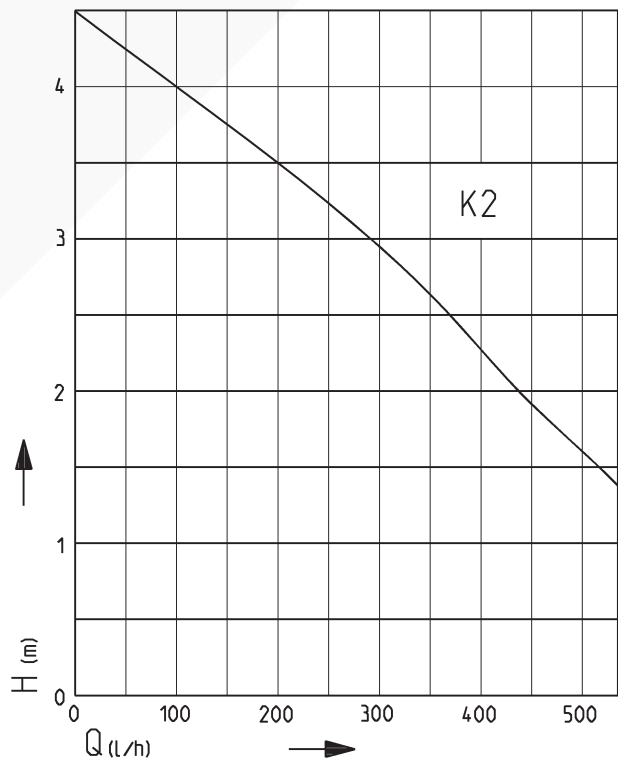
In the case of larger volumes of condensate or additional waste water, we recommend using the Hebefix above floor sump with a U 3 KS special.



K2

- For condensat \geq pH 2,7
- Extremely quiet operation
- Ready to connect
- Wall or floor mounting
- Alarm with watchdog timing monitoring
- Potential free alarm contact
- Swing-type check valve
- 6 m pressure tube with connector DN 50
- Easy to maintain

PERFORMANCE



43472-01

We reserve the right to change specifications without notice

Pump performance is subject to ISO 9906 tolerances

The minimum flow velocity in the pressure piping must be 0.7 m/s according to EN 12056.

This data is represented in the performance curve as a limit of application.

JUNG PUMPEN K2

CONDENSATE PUMP

CONDENSATE PUMPE

Type	Max. height x width x length	Cable quality	Cable length	Weight approx.	Code No.
K2	190 x 265 x 155 mm	H05VV-F-3G0,75	2 m	2.6 kg	JP09487
Accessories: Tube extension, 6 m with connector					JP27993

PERFORMANCE

Type	Delivery head H [m]	1,5	2,0	2,5	3,0	3,5	4,0
K2	Flow rate Q [l/h]	520	440	365	290	200	100

ELEKTRICAL DATA

Type	Type of current	Voltage Volt	Motor rating P ₁ W	RPM min ⁻¹	F.L.C. Ampere	Motor protection	Plug
K2	1-phase	1/N/PE~230	65	2630	0.58	Thermostat/ Alarm system	Safety-

TECHNICAL DATA

Construction

Motor in plastic housing, floor-mounted or wall-mounted installation, continuous shaft for pump impeller in tank floor, low-lying hydraulics with special open impeller for reliable ventilation, collecting tank 1.4 l with 0.9 l net capacity, with 2 x 28 mm Ø and 1 x 33 mm Ø intake openings, floor to centre inlet 95 mm, 8/11 mm Ø pressure necks for 10/14 mm transparent pressure hose, collecting tank with overflow connection for carrying away condensate in the event of back-flow.

Motor

Low-maintenance shaded pole motor with built-in motor protection thermostat for shutdown in the event of overheating.

Switching

Sturdy electrode level control for pump operation, double-stage alarm with potential-free change over contact.

Materials

Motor shaft, screws and motor location made from high-quality, acid-resistant stainless steel, collecting tank, platform and impeller made from sturdy plastic.

Scope of supply

Ready to connect with 2 m power cable and safety plug, 6 m PVC-pressure tube with connector DN 50.

